

Hampshire Water Transfer and Water Recycling Project Environmental Statement - Figure 8.26 Habitat suitability modelling output for common pipistrelle

VOLUME NUMBER: 6

PLANNING INSPECTORATE SCHEME NUMBER: WA010002

APPLICATION DOCUMENT REFERENCE: 6.3

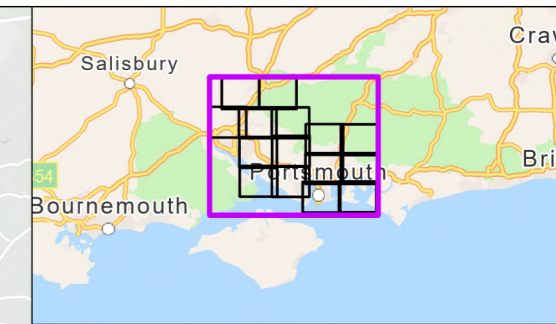
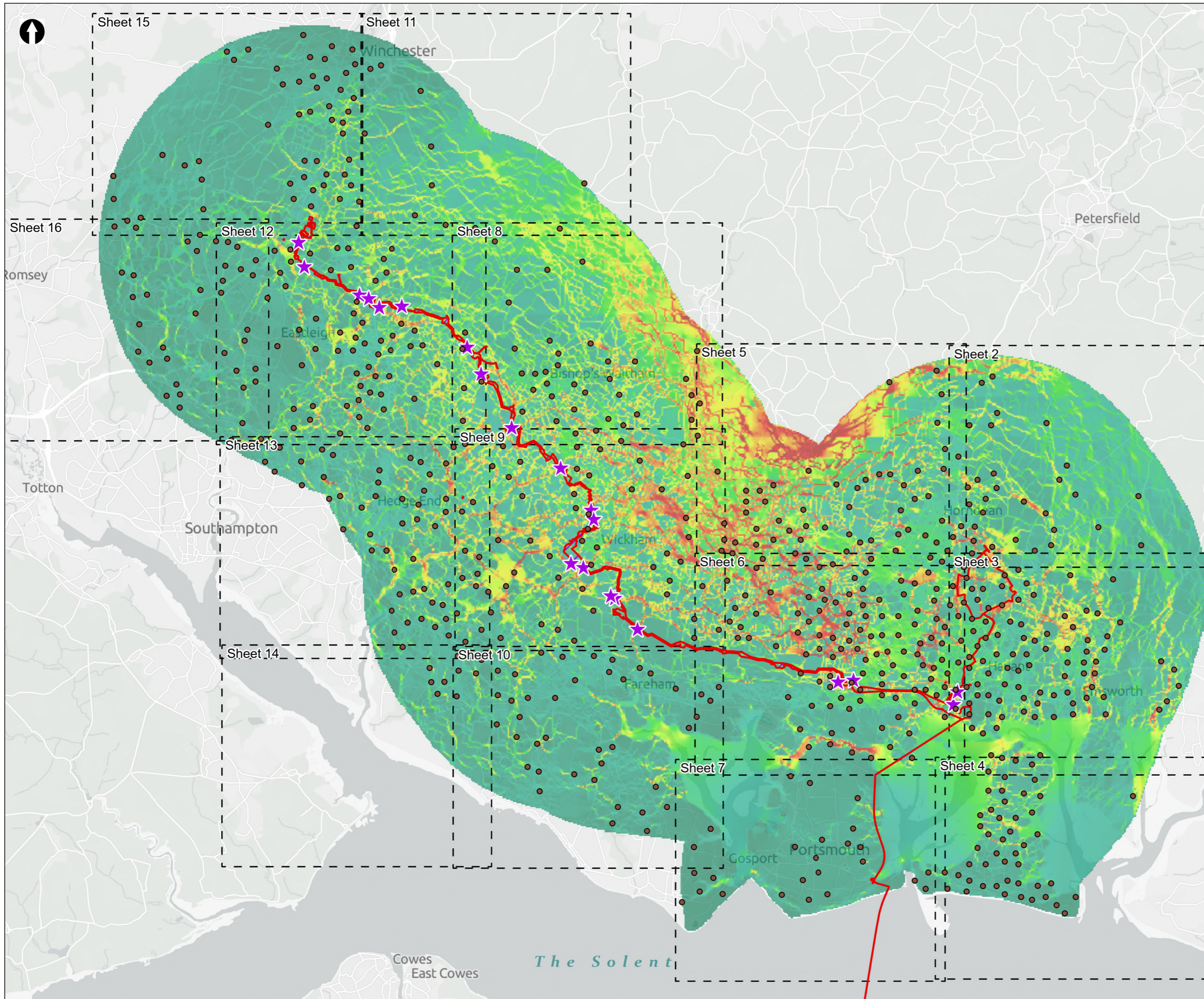
APFP REGULATION: 5(2)(a)

May 2026

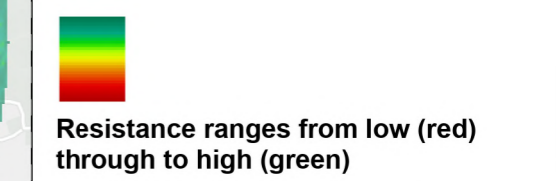
Version 0



from
**Southern
Water** 



- Order Limits
- Sheet Extent Boxes 1:30K
- Bat Direct Impact Zone
- Common Pipistrelle Observed Presence Locations
- ★ Bat Key Connective Locations



Coordinate system: British National Grid; Datum: OSGB 1936
 Data sources: © Crown copyright and database rights 2026 Ordnance Survey 0100031673. Sources: Esri, TomTom, Garmin, FAO, NOAA, USGS, © OpenStreetMap contributors, and the GIS User Community, Contains OS data © Crown Copyright and database right 2026. Contains data from OS Zoomstack

PROJECT TITLE
 Hampshire Water Transfer and Water Recycling Project

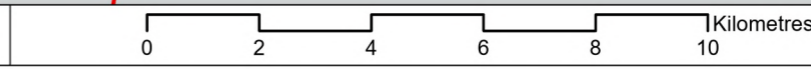


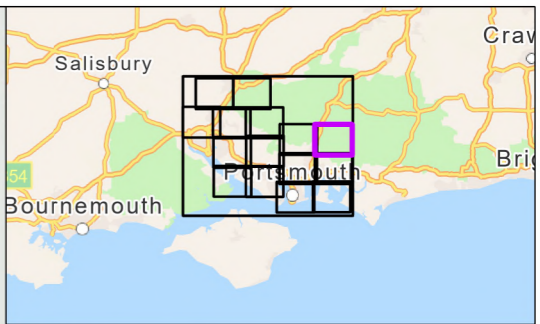
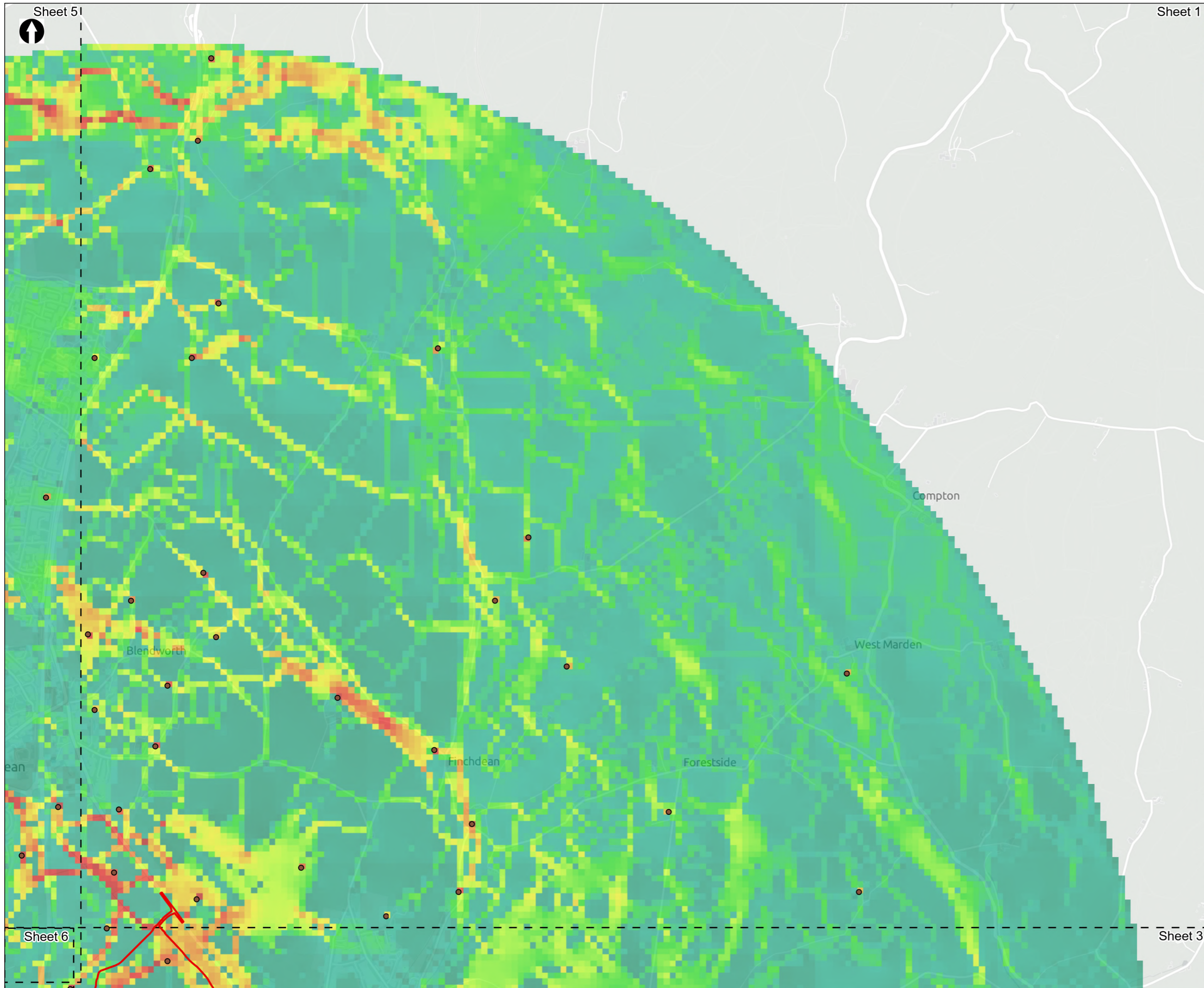
Figure 8.26
 Habitat suitability modelling output for common pipistrelle
 Sheet 1 of 16

Drawn MW	GIS Checked DL	Checked MP	Approved AK
Scale at A3 1:135,000	Status Final	Revision 05	Security STD

Drawing Number
PC5223-RHD-ES-ZZ-D-Z-0051

© Southern Water 2026
 This document is issued for the party which commissioned it and for specific purposes connected with the captioned project only. It should not be relied upon by any other party or used for any other purpose. We accept no responsibility for the consequences of this document being relied upon by any other party, or being used for any other purpose, or containing any error or omission which is due to an error or omission in data supplied to us by other parties.





- Order Limits
- Sheet Extent Boxes 1:30K
- Common Pipistrelle Observed Presence Locations



Resistance ranges from low (red) through to high (green)

Coordinate system: British National Grid; Datum: OSGB 1936
 Data sources: © Crown copyright and database rights 2026 Ordnance Survey 0100031673. Sources: Esri, TomTom, Garmin, FAO, NOAA, USGS, © OpenStreetMap contributors, and the GIS User Community, Contains OS data © Crown Copyright and database right 2026. Contains data from OS Zoomstack

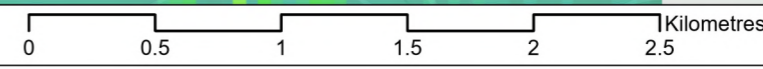
PROJECT TITLE
 Hampshire Water Transfer and Water Recycling Project

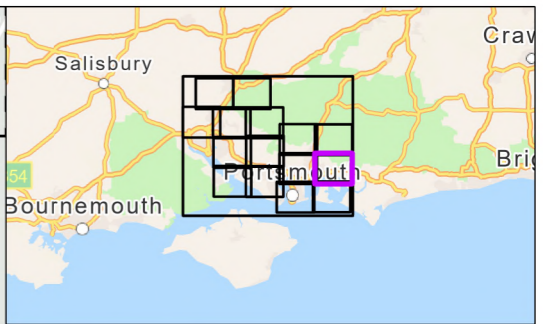
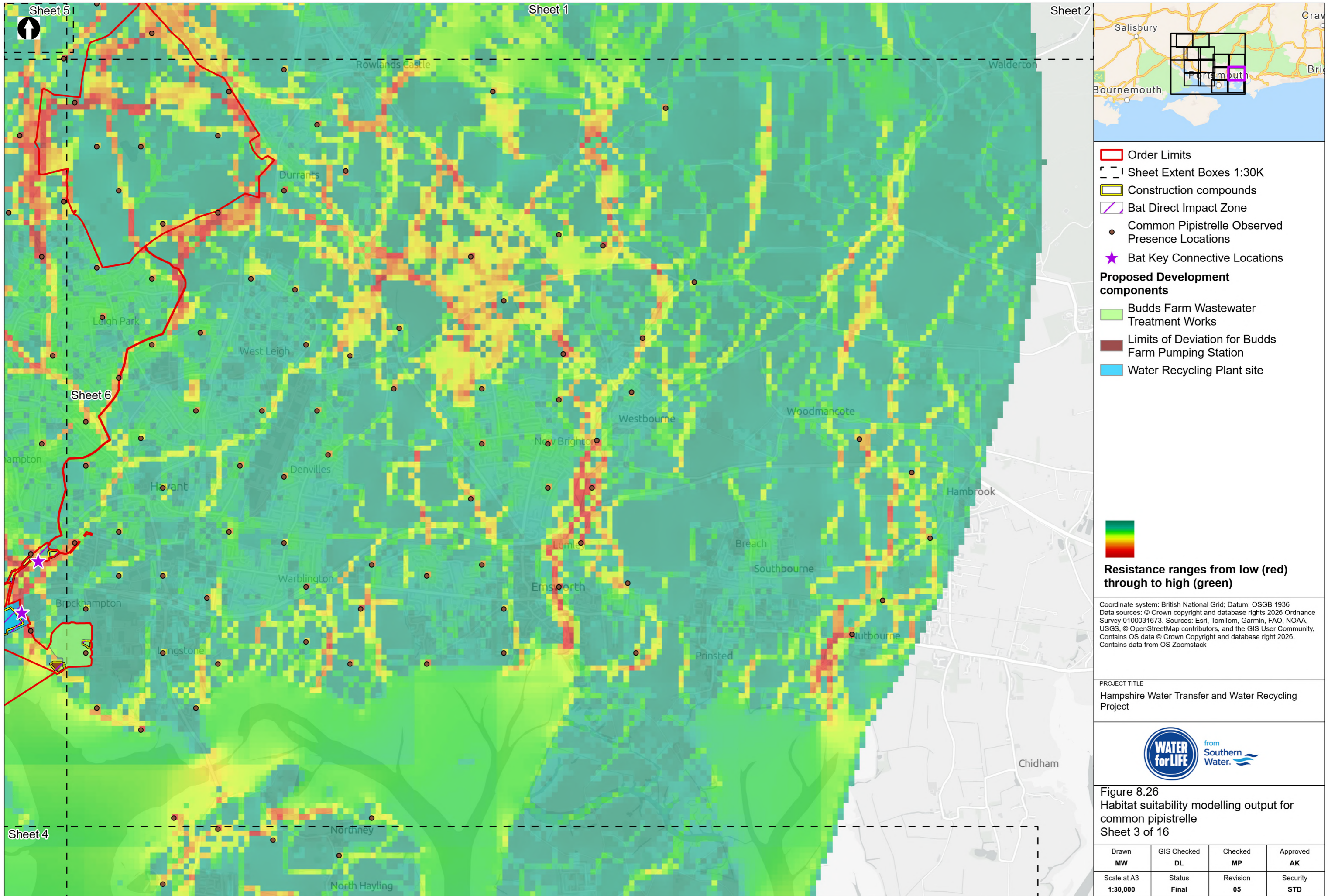


Figure 8.26
 Habitat suitability modelling output for common pipistrelle
 Sheet 2 of 16

Drawn MW	GIS Checked DL	Checked MP	Approved AK
Scale at A3 1:30,000	Status Final	Revision 05	Security STD

Drawing Number
PC5223-RHD-ES-ZZ-D-Z-0051





- Order Limits
 - Sheet Extent Boxes 1:30K
 - Construction compounds
 - Bat Direct Impact Zone
 - Common Pipistrelle Observed Presence Locations
 - Bat Key Connective Locations
- Proposed Development components**
- Budds Farm Wastewater Treatment Works
 - Limits of Deviation for Budds Farm Pumping Station
 - Water Recycling Plant site
- Resistance ranges from low (red) through to high (green)

Coordinate system: British National Grid; Datum: OSGB 1936
 Data sources: © Crown copyright and database rights 2026 Ordnance Survey 0100031673. Sources: Esri, TomTom, Garmin, FAO, NOAA, USGS, © OpenStreetMap contributors, and the GIS User Community, Contains OS data © Crown Copyright and database right 2026. Contains data from OS Zoomstack

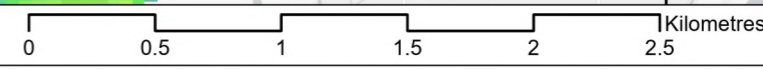
PROJECT TITLE
 Hampshire Water Transfer and Water Recycling Project



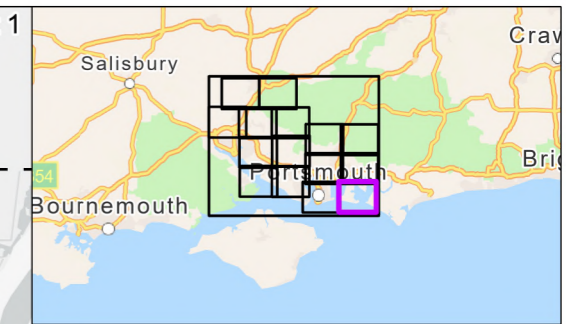
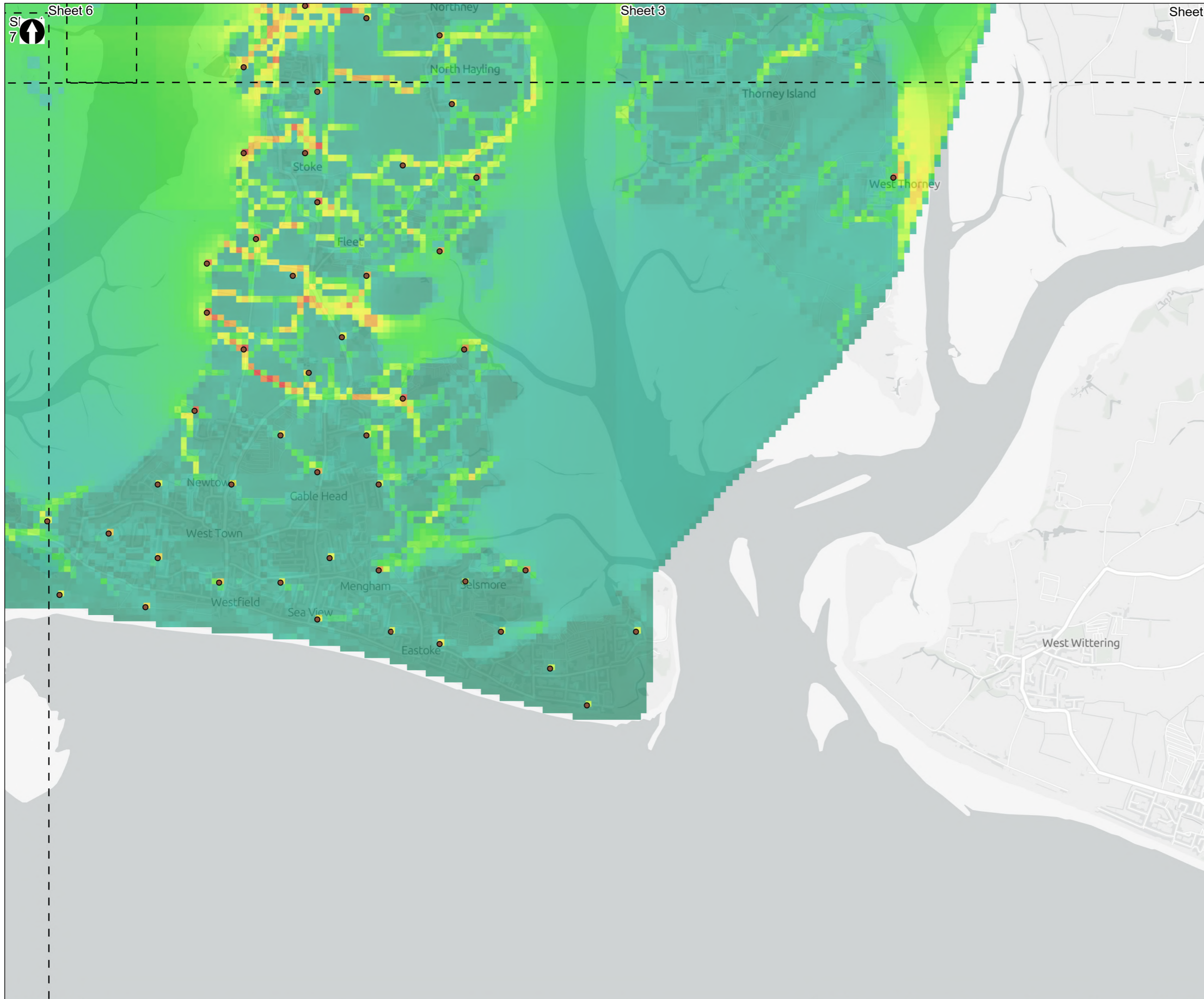
Figure 8.26
 Habitat suitability modelling output for common pipistrelle
 Sheet 3 of 16

Drawn MW	GIS Checked DL	Checked MP	Approved AK
Scale at A3 1:30,000	Status Final	Revision 05	Security STD

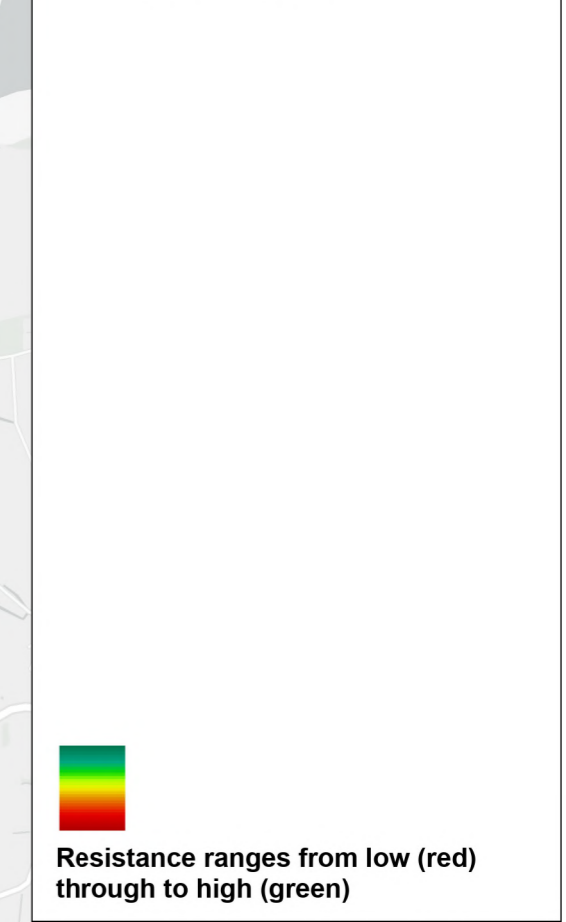
© Southern Water 2026
 This document is issued for the party which commissioned it and for specific purposes connected with the captioned project only. It should not be relied upon by any other party or used for any other purpose. We accept no responsibility for the consequences of this document being relied upon by any other party, or being used for any other purpose, or containing any error or omission which is due to an error or omission in data supplied to us by other parties.



Drawing Number
PC5223-RHD-ES-ZZ-D-Z-0051



- Sheet Extent Boxes 1:30K
- Common Pipistrelle Observed Presence Locations



Coordinate system: British National Grid; Datum: OSGB 1936
 Data sources: © Crown copyright and database rights 2026 Ordnance Survey 0100031673. Sources: Esri, TomTom, Garmin, FAO, NOAA, USGS, © OpenStreetMap contributors, and the GIS User Community, Contains OS data © Crown Copyright and database right 2026. Contains data from OS Zoomstack

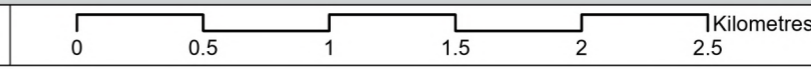
PROJECT TITLE
 Hampshire Water Transfer and Water Recycling Project

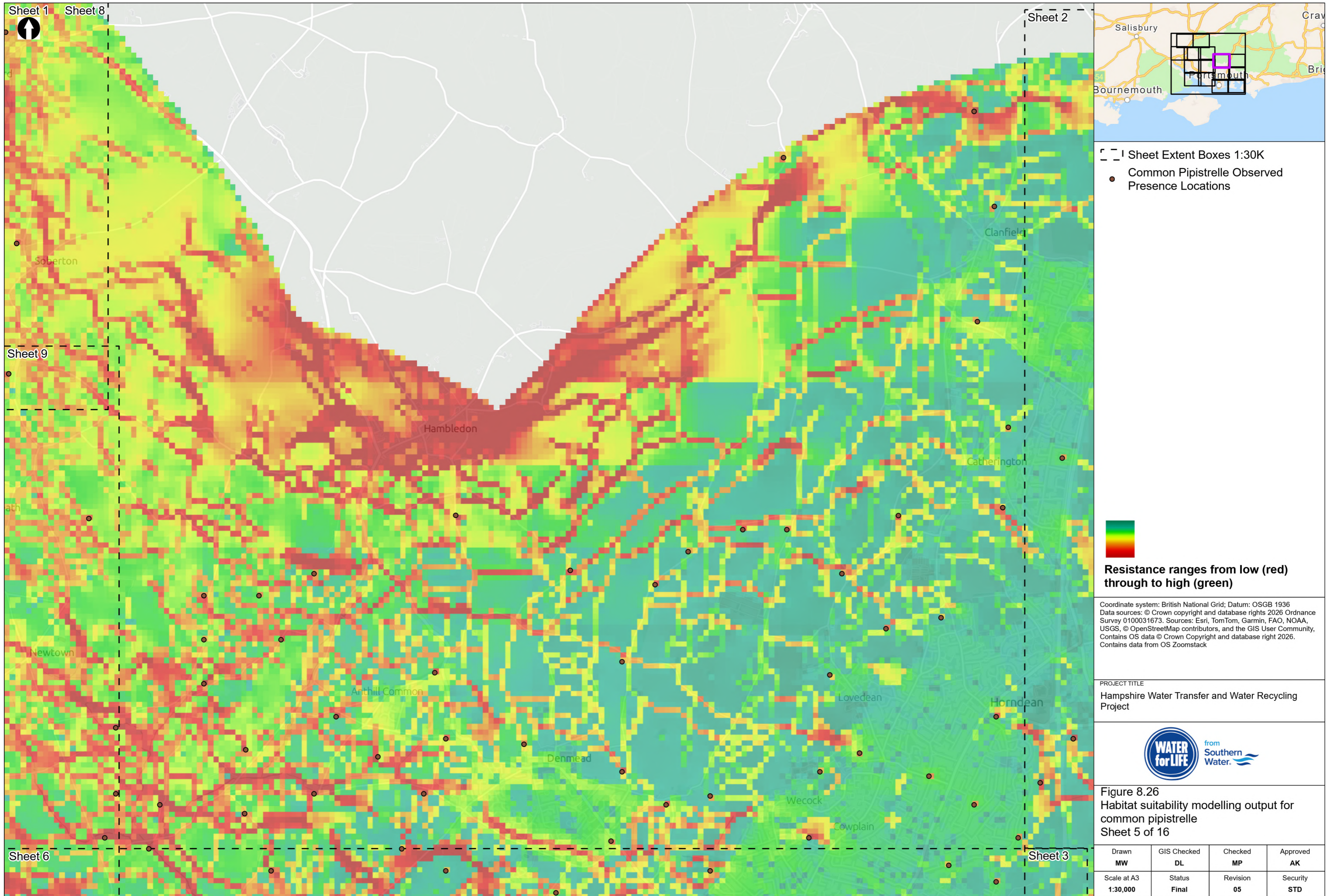


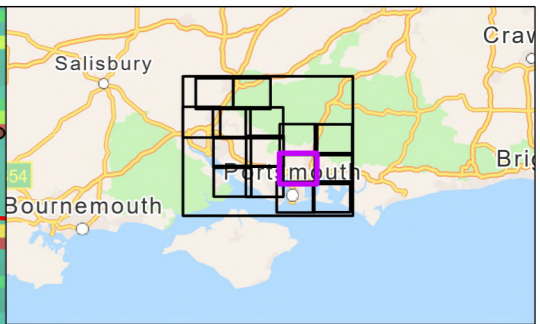
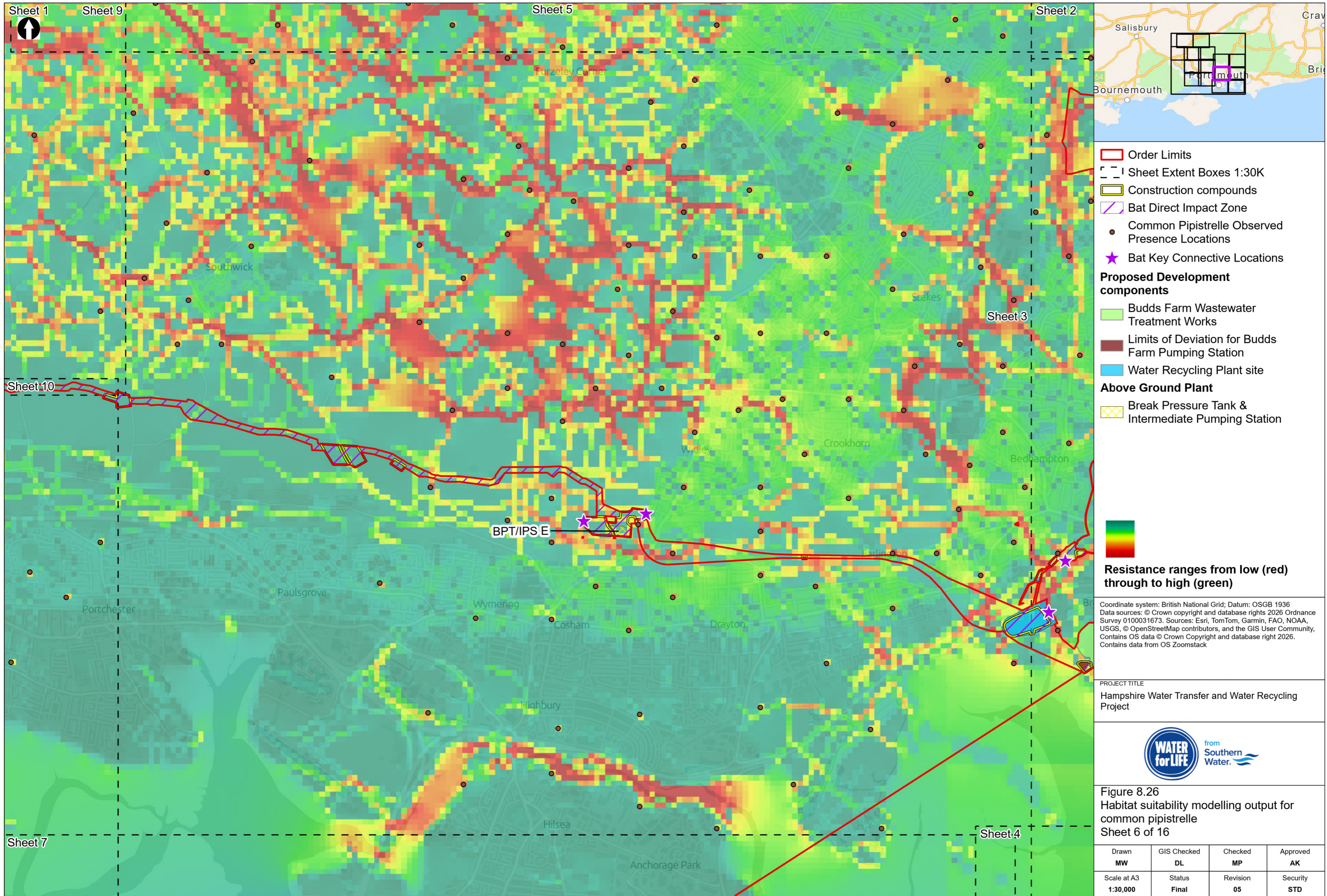
Figure 8.26
 Habitat suitability modelling output for common pipistrelle
 Sheet 4 of 16

Drawn MW	GIS Checked DL	Checked MP	Approved AK
Scale at A3 1:30,000	Status Final	Revision 05	Security STD

Drawing Number
PC5223-RHD-ES-ZZ-D-Z-0051







- Order Limits
 - Sheet Extent Boxes 1:30K
 - Construction compounds
 - Bat Direct Impact Zone
 - Common Pipistrelle Observed Presence Locations
 - Bat Key Connective Locations
- Proposed Development components**
- Budds Farm Wastewater Treatment Works
 - Limits of Deviation for Budds Farm Pumping Station
 - Water Recycling Plant site
- Above Ground Plant**
- Break Pressure Tank & Intermediate Pumping Station
- Resistance ranges from low (red) through to high (green)

Coordinate system: British National Grid; Datum: OSGB 1936
 Data sources: © Crown copyright and database rights 2026 Ordnance Survey 0100031673. Sources: Esri, TomTom, Garmin, FAO, NOAA, USGS, © OpenStreetMap contributors, and the GIS User Community, Contains OS data © Crown Copyright and database right 2026. Contains data from OS Zoomstack

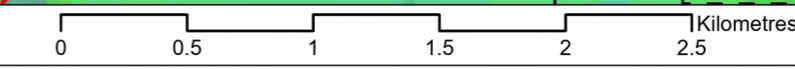
PROJECT TITLE
 Hampshire Water Transfer and Water Recycling Project



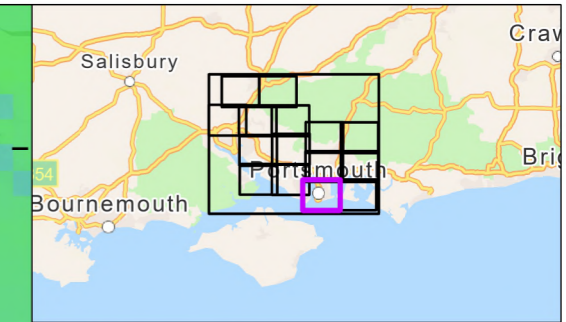
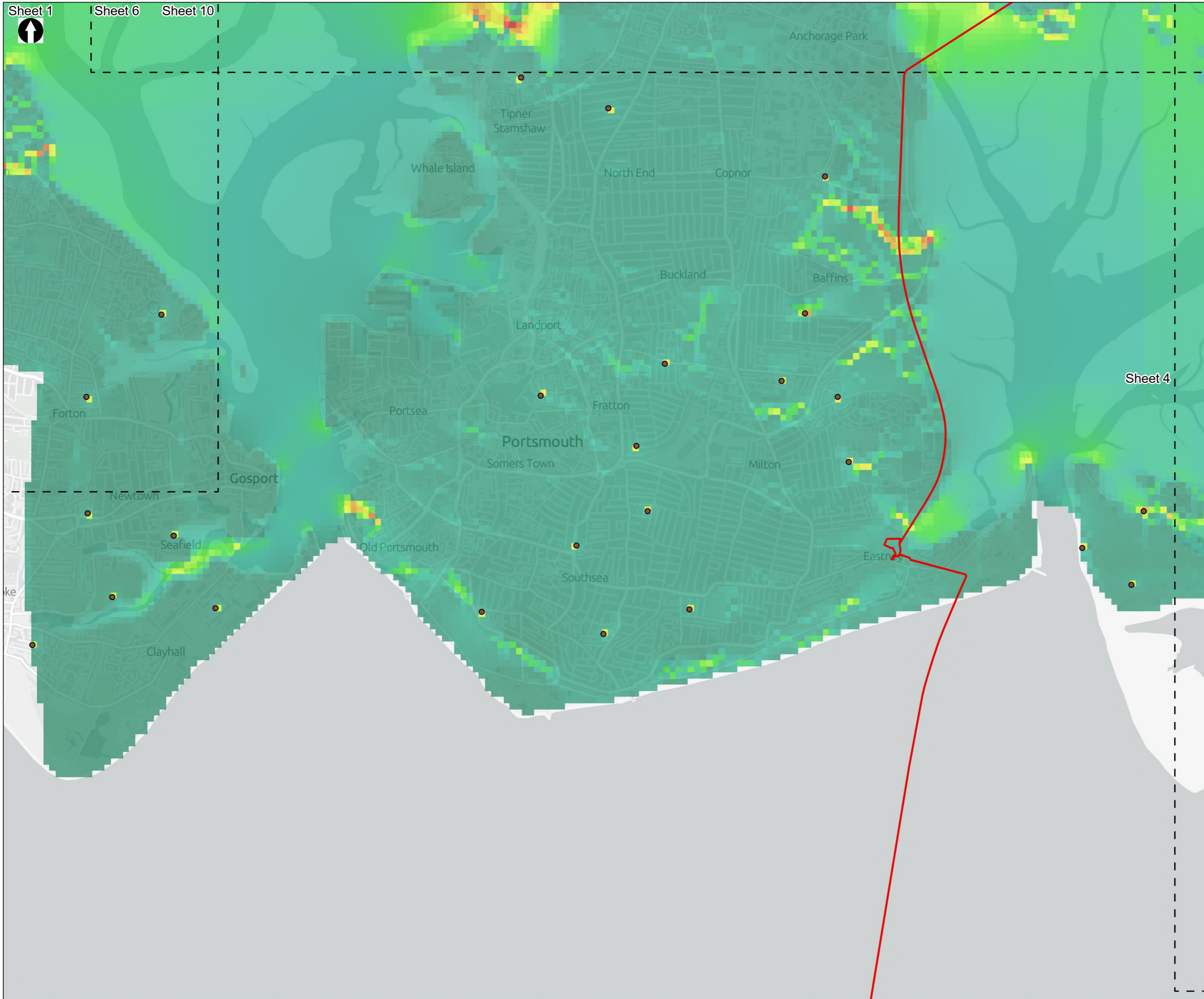
Figure 8.26
 Habitat suitability modelling output for common pipistrelle
 Sheet 6 of 16

Drawn MW	GIS Checked DL	Checked MP	Approved AK
Scale at A3 1:30,000	Status Final	Revision 05	Security STD

© Southern Water 2026
 This document is issued for the party which commissioned it and for specific purposes connected with the captioned project only. It should not be relied upon by any other party or used for any other purpose. We accept no responsibility for the consequences of this document being relied upon by any other party, or being used for any other purpose, or containing any error or omission which is due to an error or omission in data supplied to us by other parties.



Drawing Number
PC5223-RHD-ES-ZZ-D-Z-0051



- Order Limits
- Sheet Extent Boxes 1:30K
- Common Pipistrelle Observed Presence Locations

Resistance ranges from low (red) through to high (green)

Coordinate system: British National Grid; Datum: OSGB 1936
 Data sources: © Crown copyright and database rights 2026 Ordnance Survey 0100031673. Sources: Esri, TomTom, Garmin, FAO, NOAA, USGS, © OpenStreetMap contributors, and the GIS User Community, Contains OS data © Crown Copyright and database right 2026. Contains data from OS Zoomstack

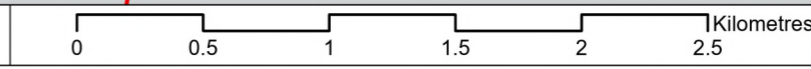
PROJECT TITLE
 Hampshire Water Transfer and Water Recycling Project

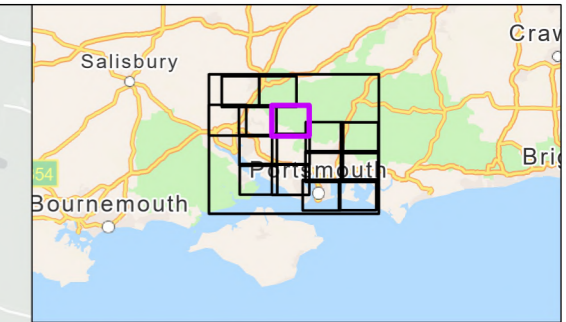
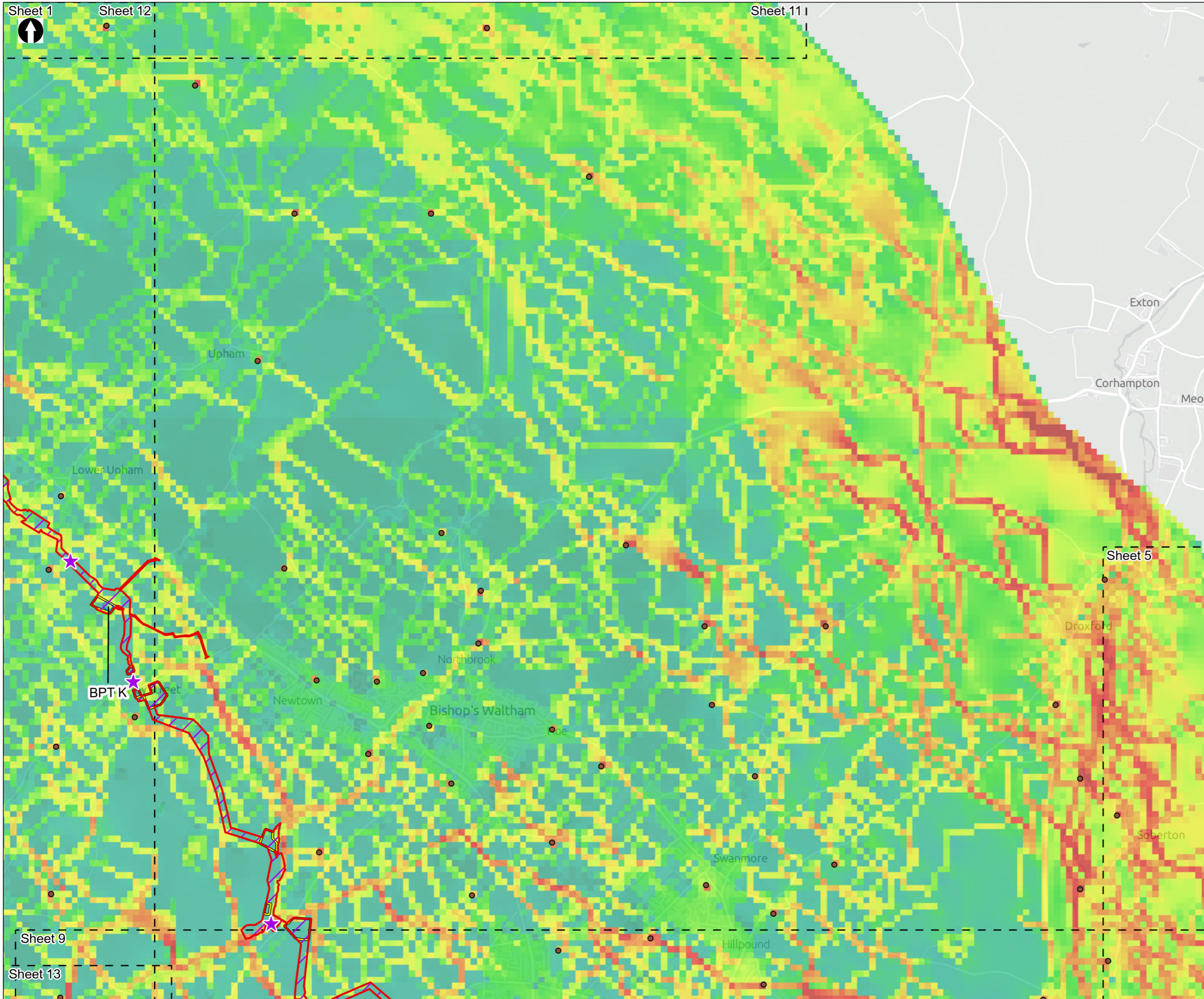


Figure 8.26
 Habitat suitability modelling output for common pipistrelle
 Sheet 7 of 16

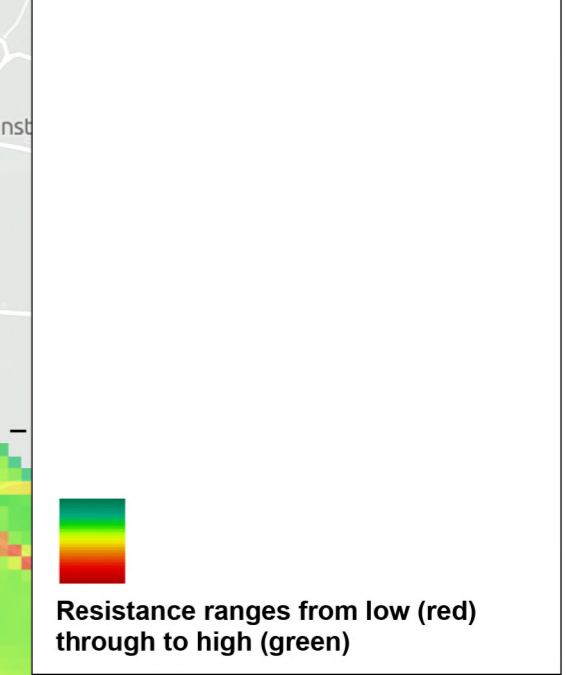
Drawn MW	GIS Checked DL	Checked MP	Approved AK
Scale at A3 1:30,000	Status Final	Revision 05	Security STD

Drawing Number
PC5223-RHD-ES-ZZ-D-Z-0051





- Order Limits
 - Sheet Extent Boxes 1:30K
 - Construction compounds
 - Bat Direct Impact Zone
 - Common Pipistrelle Observed Presence Locations
 - ★ Bat Key Connective Locations
- Above Ground Plant**
- Break Pressure Tank



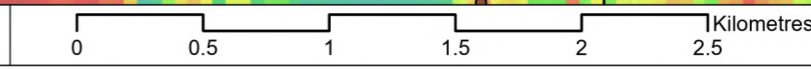
Coordinate system: British National Grid; Datum: OSGB 1936
 Data sources: © Crown copyright and database rights 2026 Ordnance Survey 0100031673. Sources: Esri, TomTom, Garmin, FAO, NOAA, USGS, © OpenStreetMap contributors, and the GIS User Community, Contains OS data © Crown Copyright and database right 2026. Contains data from OS Zoomstack

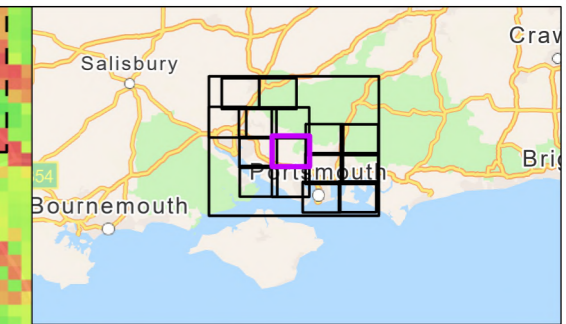
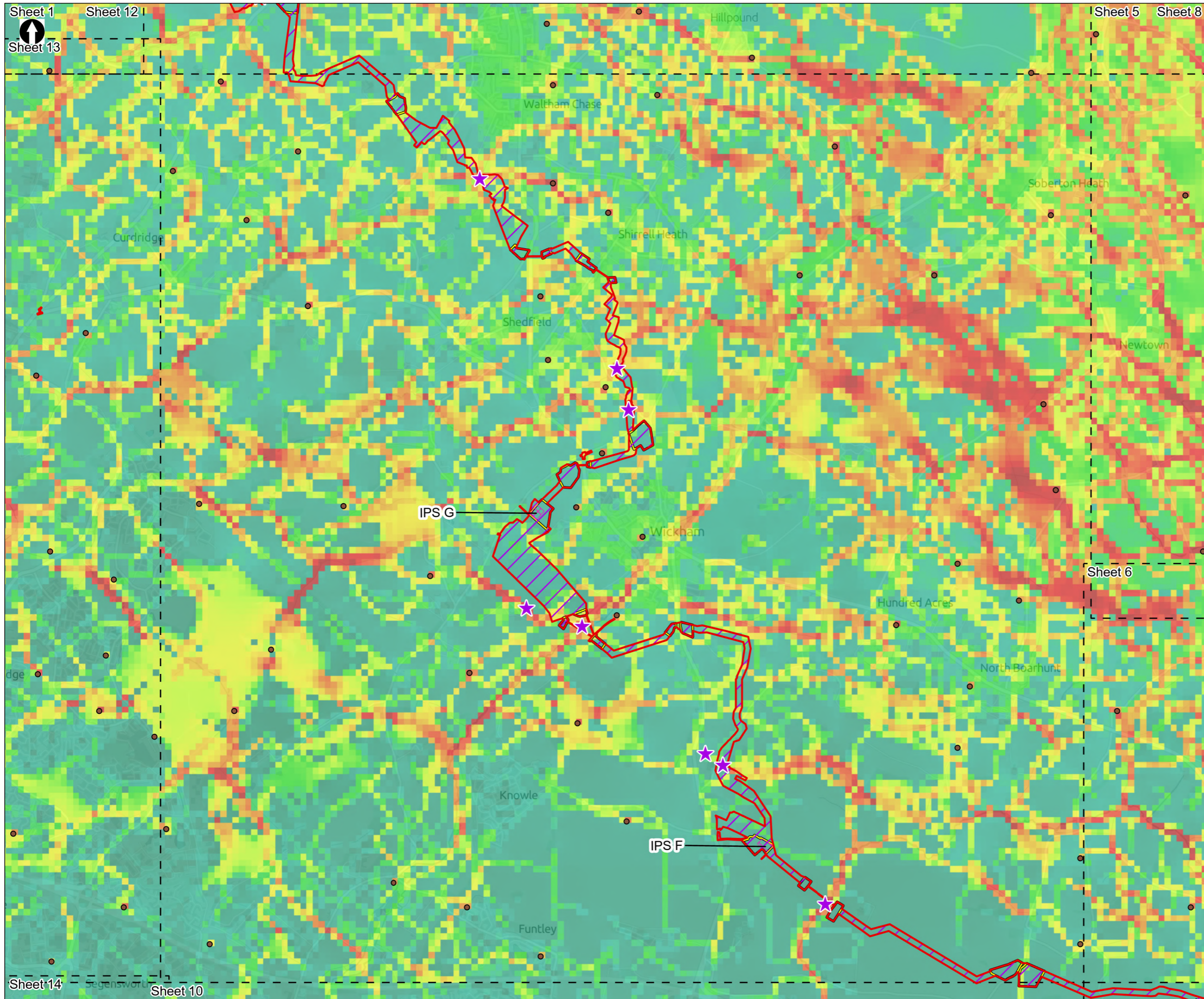
PROJECT TITLE
 Hampshire Water Transfer and Water Recycling Project




Figure 8.26
 Habitat suitability modelling output for common pipistrelle
 Sheet 8 of 16

Drawn MW	GIS Checked DL	Checked MP	Approved AK
Scale at A3 1:30,000	Status Final	Revision 05	Security STD





Order Limits
 Sheet Extent Boxes 1:30K
 Construction compounds
 Bat Direct Impact Zone
 Common Pipistrelle Observed Presence Locations
★ Bat Key Connective Locations
Above Ground Plant
 Intermediate Pumping Station


Resistance ranges from low (red) through to high (green)

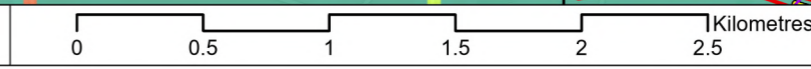
Coordinate system: British National Grid; Datum: OSGB 1936
 Data sources: © Crown copyright and database rights 2026 Ordnance Survey 0100031673. Sources: Esri, TomTom, Garmin, FAO, NOAA, USGS, © OpenStreetMap contributors, and the GIS User Community, Contains OS data © Crown Copyright and database right 2026. Contains data from OS Zoomstack

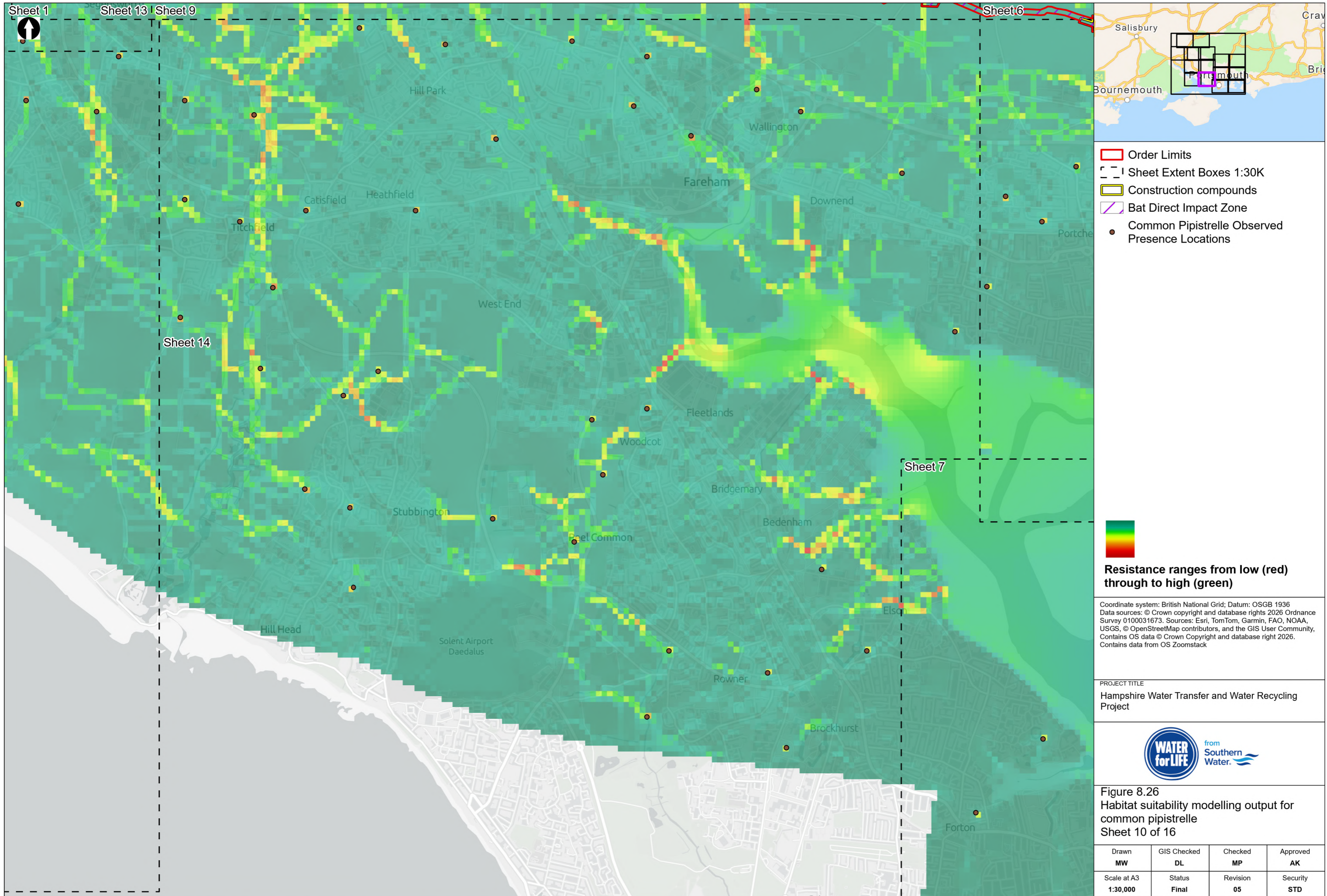
PROJECT TITLE
 Hampshire Water Transfer and Water Recycling Project



Figure 8.26
 Habitat suitability modelling output for common pipistrelle
 Sheet 9 of 16

Drawn MW	GIS Checked DL	Checked MP	Approved AK
Scale at A3 1:30,000	Status Final	Revision 05	Security STD





- Order Limits
- Sheet Extent Boxes 1:30K
- Construction compounds
- Bat Direct Impact Zone
- Common Pipistrelle Observed Presence Locations

 Resistance ranges from low (red) through to high (green)

Coordinate system: British National Grid; Datum: OSGB 1936
 Data sources: © Crown copyright and database rights 2026 Ordnance Survey 0100031673. Sources: Esri, TomTom, Garmin, FAO, NOAA, USGS, © OpenStreetMap contributors, and the GIS User Community, Contains OS data © Crown Copyright and database right 2026. Contains data from OS Zoomstack

PROJECT TITLE
 Hampshire Water Transfer and Water Recycling Project

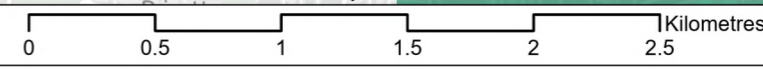


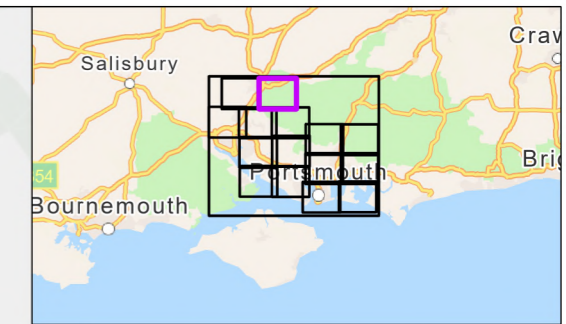
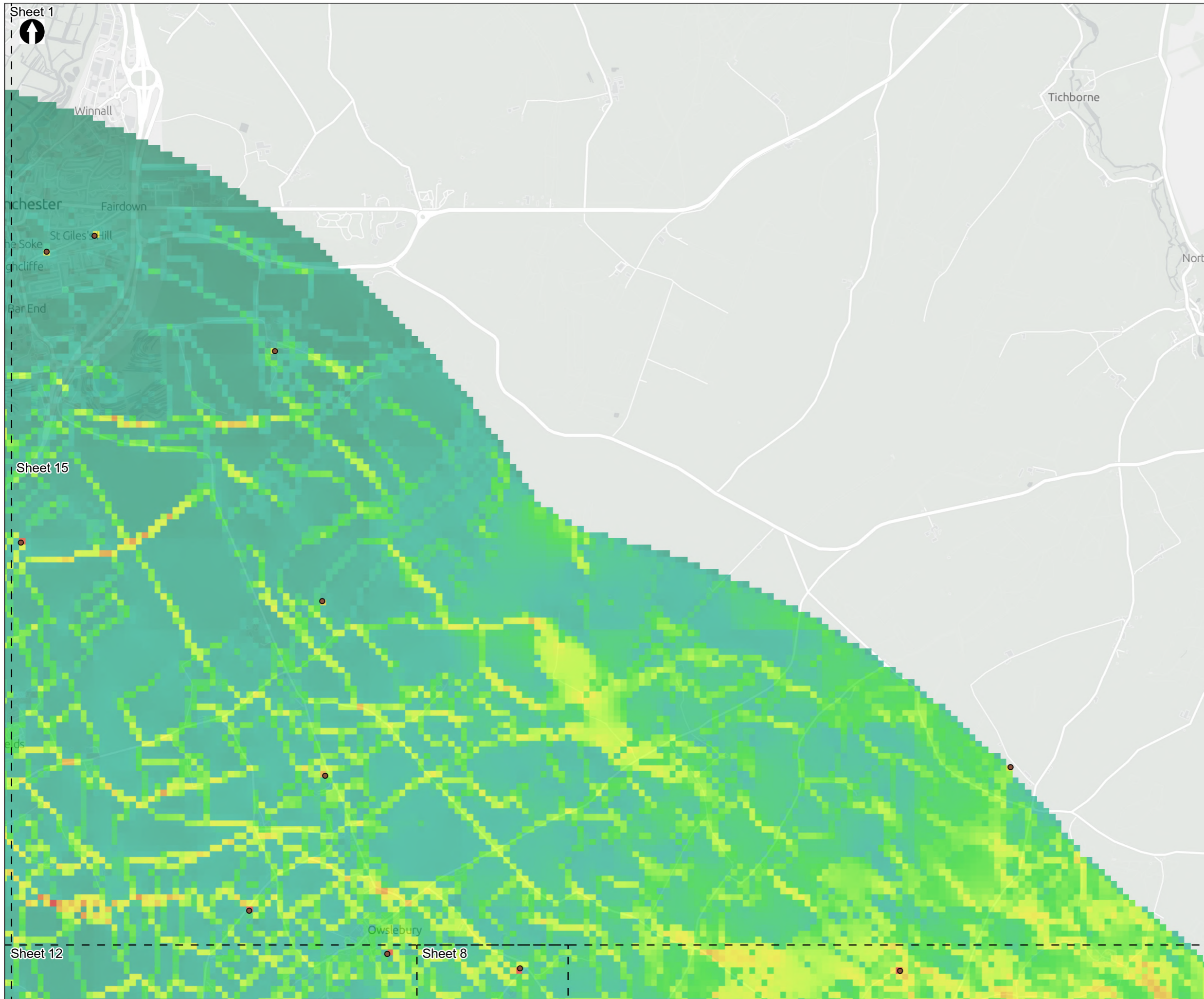
Figure 8.26
 Habitat suitability modelling output for common pipistrelle
 Sheet 10 of 16

Drawn MW	GIS Checked DL	Checked MP	Approved AK
Scale at A3 1:30,000	Status Final	Revision 05	Security STD

Drawing Number
PC5223-RHD-ES-ZZ-D-Z-0051

© Southern Water 2026
 This document is issued for the party which commissioned it and for specific purposes connected with the captioned project only. It should not be relied upon by any other party or used for any other purpose. We accept no responsibility for the consequences of this document being relied upon by any other party, or being used for any other purpose, or containing any error or omission which is due to an error or omission in data supplied to us by other parties.





- Sheet Extent Boxes 1:30K
- Common Pipistrelle Observed Presence Locations

Resistance ranges from low (red) through to high (green)

Coordinate system: British National Grid; Datum: OSGB 1936
 Data sources: © Crown copyright and database rights 2026 Ordnance Survey 0100031673. Sources: Esri, TomTom, Garmin, FAO, NOAA, USGS, © OpenStreetMap contributors, and the GIS User Community, Contains OS data © Crown Copyright and database right 2026. Contains data from OS Zoomstack

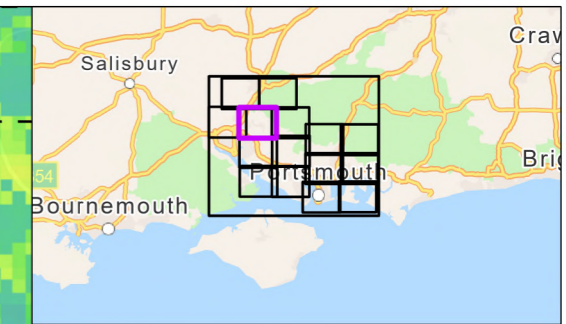
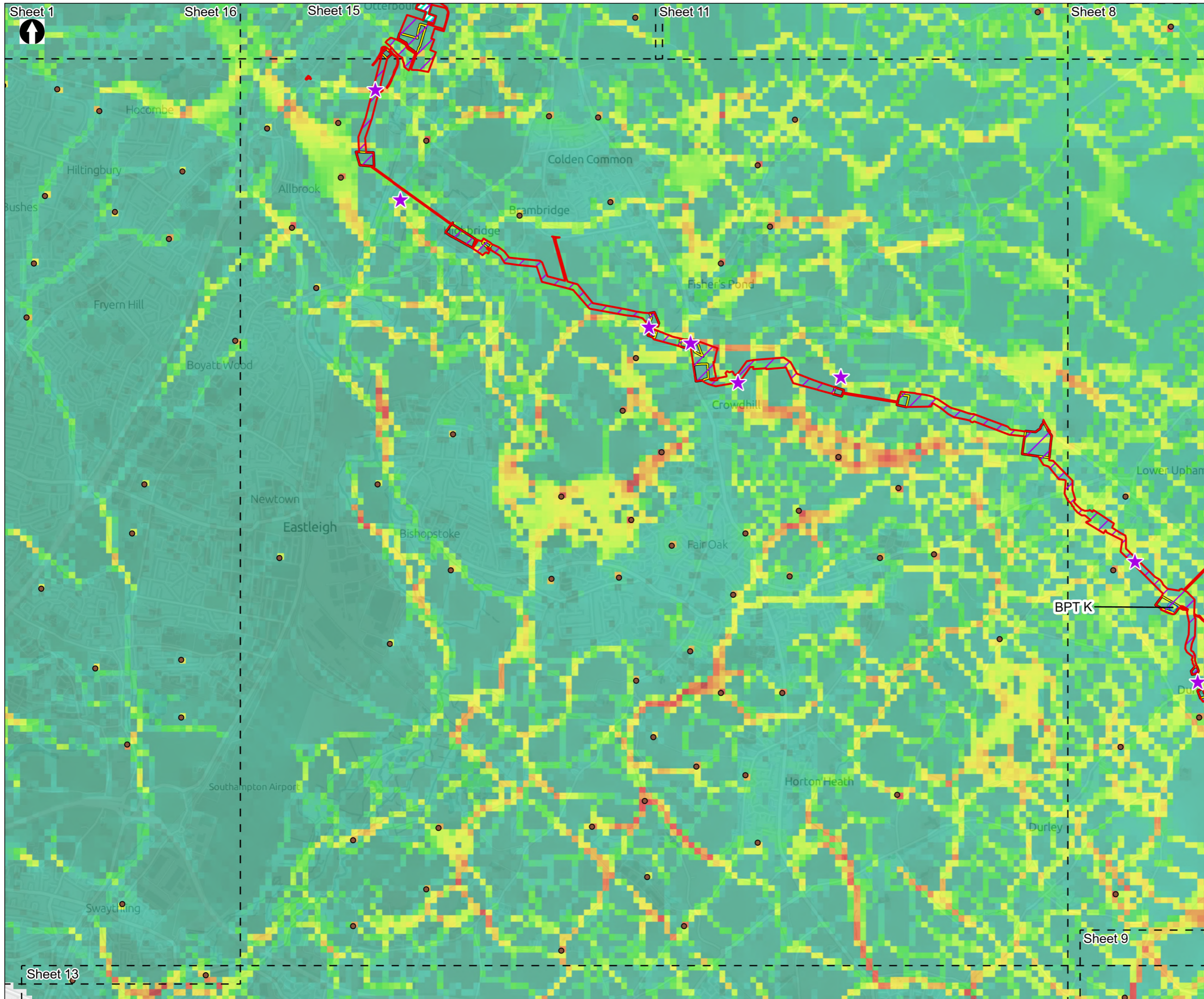
PROJECT TITLE
 Hampshire Water Transfer and Water Recycling Project



Figure 8.26
 Habitat suitability modelling output for common pipistrelle
 Sheet 11 of 16

Drawn MW	GIS Checked DL	Checked MP	Approved AK
Scale at A3 1:30,000	Status Final	Revision 05	Security STD





Order Limits
 Sheet Extent Boxes 1:30K
 Construction compounds
 Limits of Deviation for Otterbourne INNS Treatment Plant
 Bat Direct Impact Zone
 Common Pipistrelle Observed Presence Locations
 Bat Key Connective Locations
Above Ground Plant
 Break Pressure Tank

Resistance ranges from low (red) through to high (green)

Coordinate system: British National Grid; Datum: OSGB 1936
 Data sources: © Crown copyright and database rights 2026 Ordnance Survey 0100031673. Sources: Esri, TomTom, Garmin, FAO, NOAA, USGS, © OpenStreetMap contributors, and the GIS User Community, Contains OS data © Crown Copyright and database right 2026. Contains data from OS Zoomstack

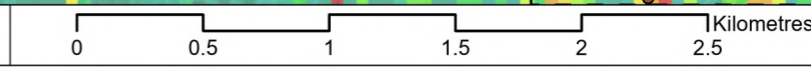
PROJECT TITLE
 Hampshire Water Transfer and Water Recycling Project

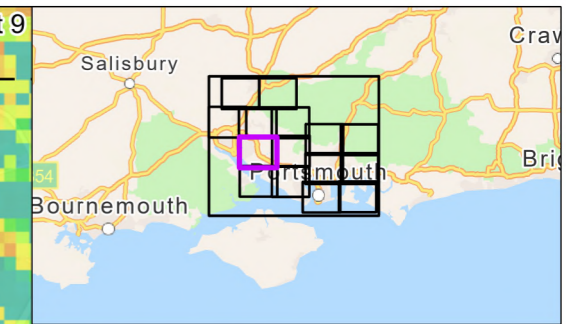
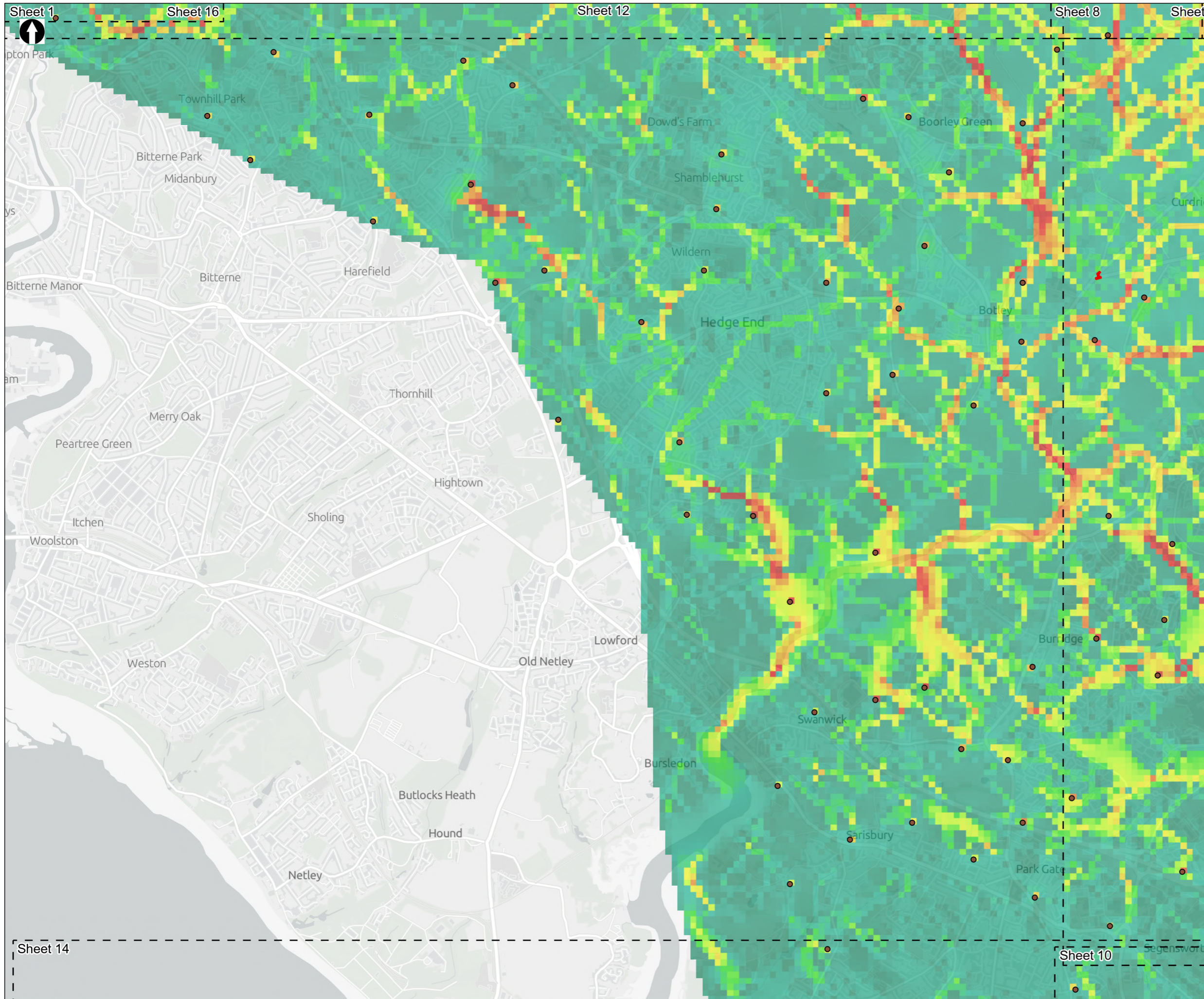


Figure 8.26
 Habitat suitability modelling output for common pipistrelle
 Sheet 12 of 16

Drawn MW	GIS Checked DL	Checked MP	Approved AK
Scale at A3 1:30,000	Status Final	Revision 05	Security STD

Drawing Number
 PC5223-RHD-ES-ZZ-D-Z-0051





Order Limits
 Sheet Extent Boxes 1:30K
 Bat Direct Impact Zone
 Common Pipistrelle Observed Presence Locations

Resistance ranges from low (red) through to high (green)

Coordinate system: British National Grid; Datum: OSGB 1936
 Data sources: © Crown copyright and database rights 2026 Ordnance Survey 0100031673. Sources: Esri, TomTom, Garmin, FAO, NOAA, USGS, © OpenStreetMap contributors, and the GIS User Community, Contains OS data © Crown Copyright and database right 2026. Contains data from OS Zoomstack

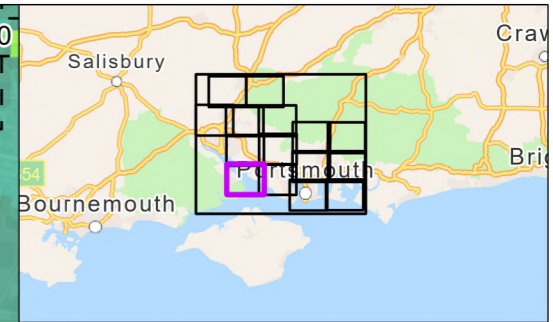
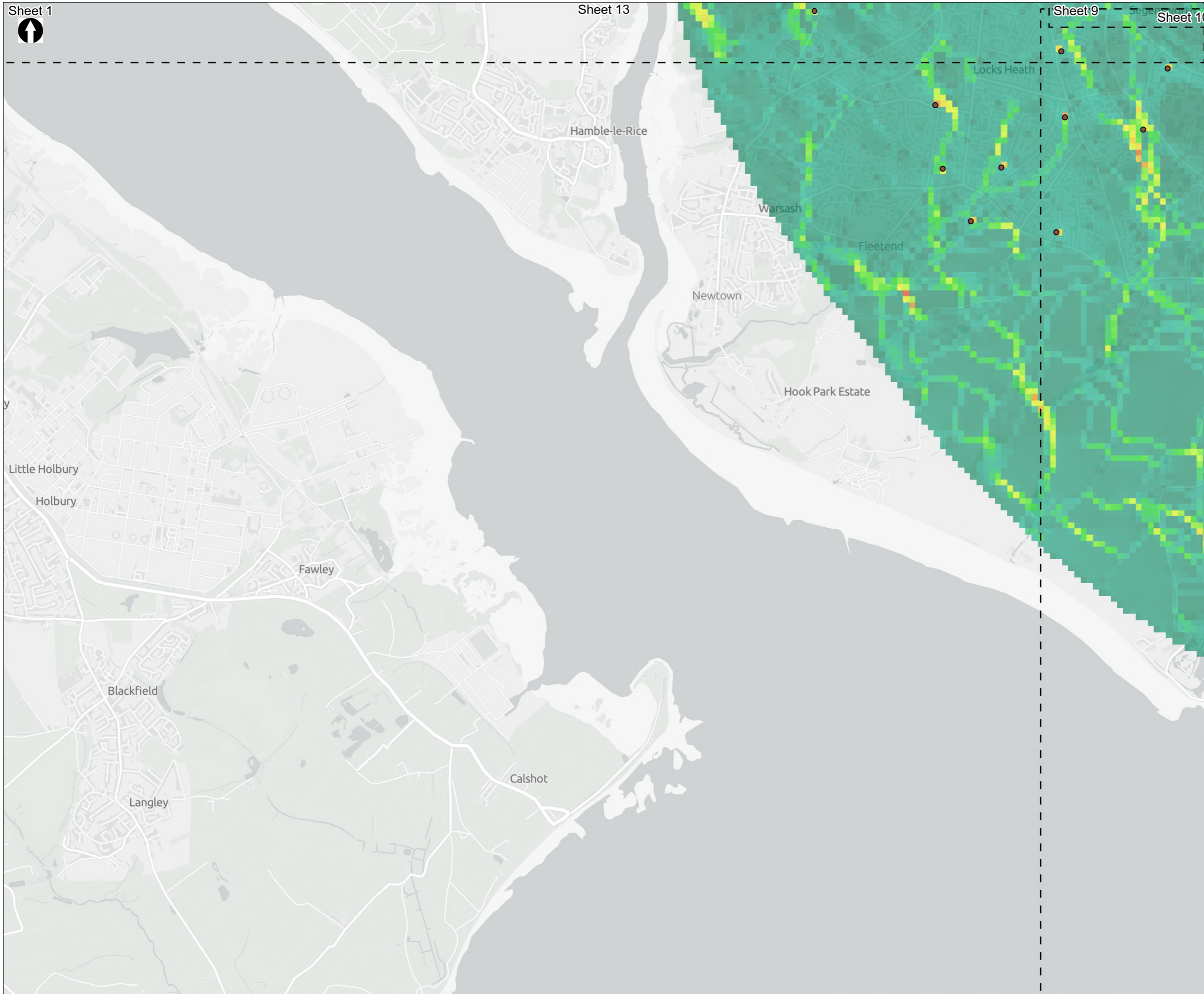
PROJECT TITLE
 Hampshire Water Transfer and Water Recycling Project



Figure 8.26
 Habitat suitability modelling output for common pipistrelle
 Sheet 13 of 16

Drawn MW	GIS Checked DL	Checked MP	Approved AK
Scale at A3 1:30,000	Status Final	Revision 05	Security STD





- Sheet Extent Boxes 1:30K
- Common Pipistrelle Observed Presence Locations



Resistance ranges from low (red) through to high (green)

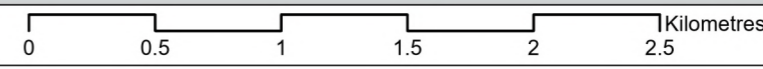
Coordinate system: British National Grid; Datum: OSGB 1936
 Data sources: © Crown copyright and database rights 2026 Ordnance Survey 0100031673. Sources: Esri, TomTom, Garmin, FAO, NOAA, USGS, © OpenStreetMap contributors, and the GIS User Community, Contains OS data © Crown Copyright and database right 2026. Contains data from OS Zoomstack

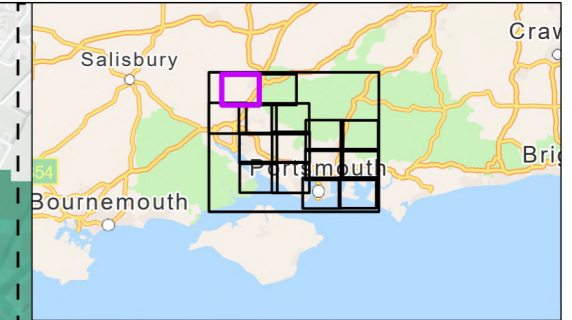
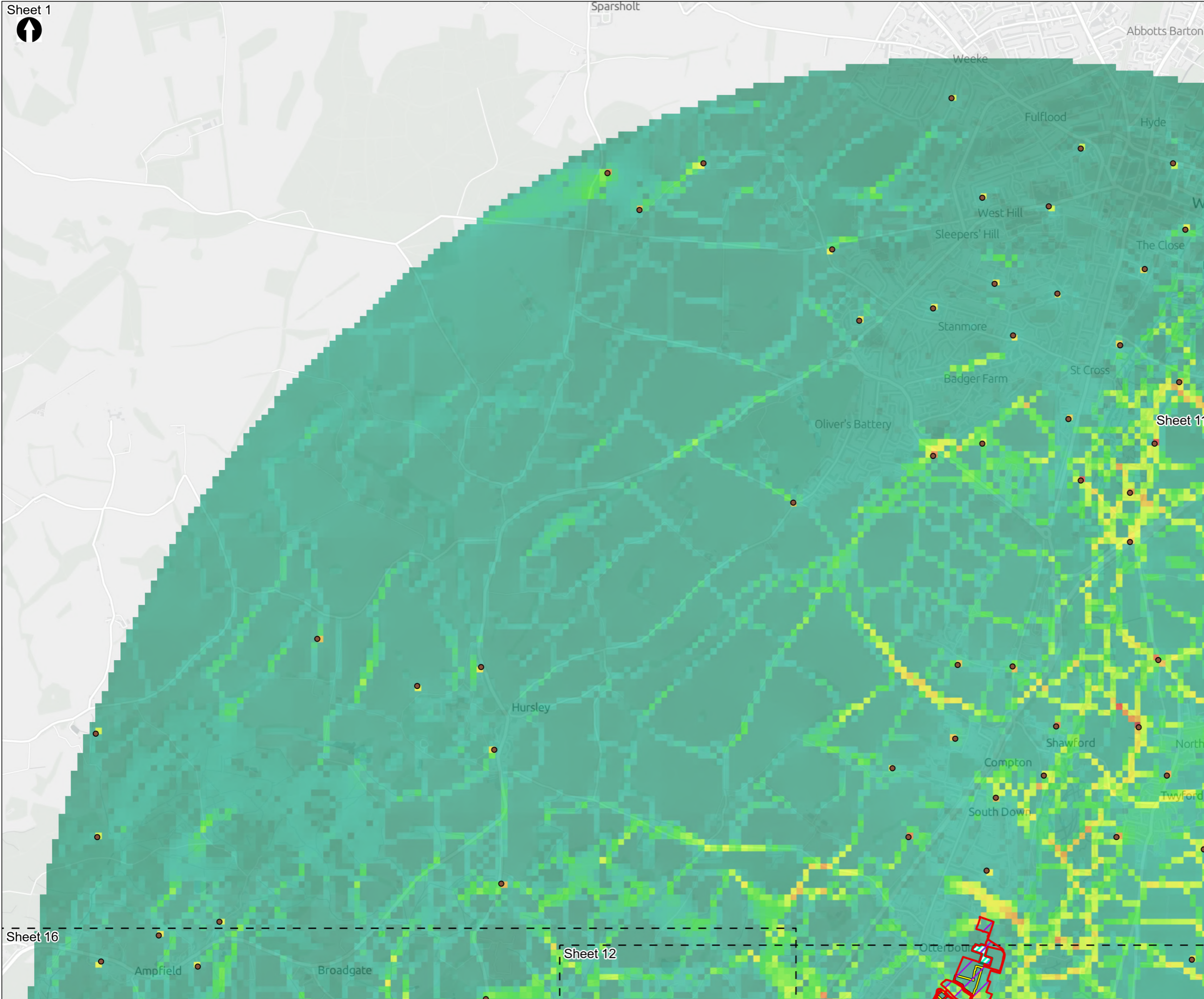
PROJECT TITLE
 Hampshire Water Transfer and Water Recycling Project



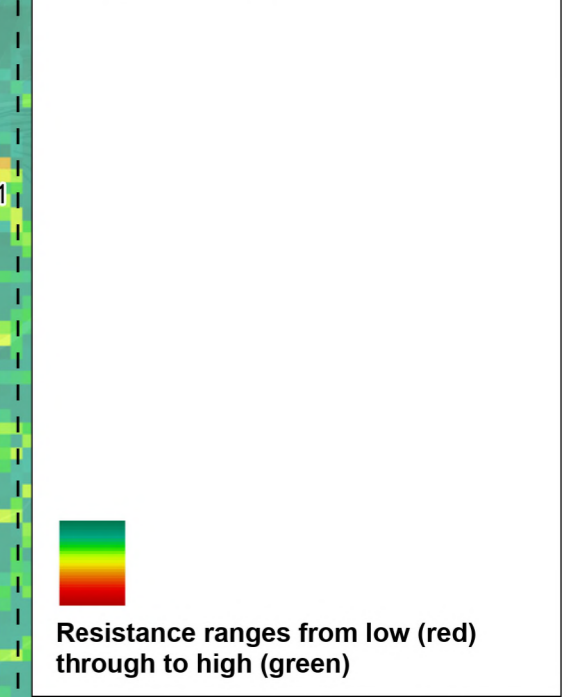
Figure 8.26
 Habitat suitability modelling output for common pipistrelle
 Sheet 14 of 16

Drawn MW	GIS Checked DL	Checked MP	Approved AK
Scale at A3 1:30,000	Status Final	Revision 05	Security STD





- Order Limits
- Sheet Extent Boxes 1:30K
- Construction compounds
- Limits of Deviation for Otterbourne INNS Treatment Plant
- Bat Direct Impact Zone
- Common Pipistrelle Observed Presence Locations



Coordinate system: British National Grid; Datum: OSGB 1936
 Data sources: © Crown copyright and database rights 2026 Ordnance Survey 0100031673. Sources: Esri, TomTom, Garmin, FAO, NOAA, USGS, © OpenStreetMap contributors, and the GIS User Community, Contains OS data © Crown Copyright and database right 2026. Contains data from OS Zoomstack

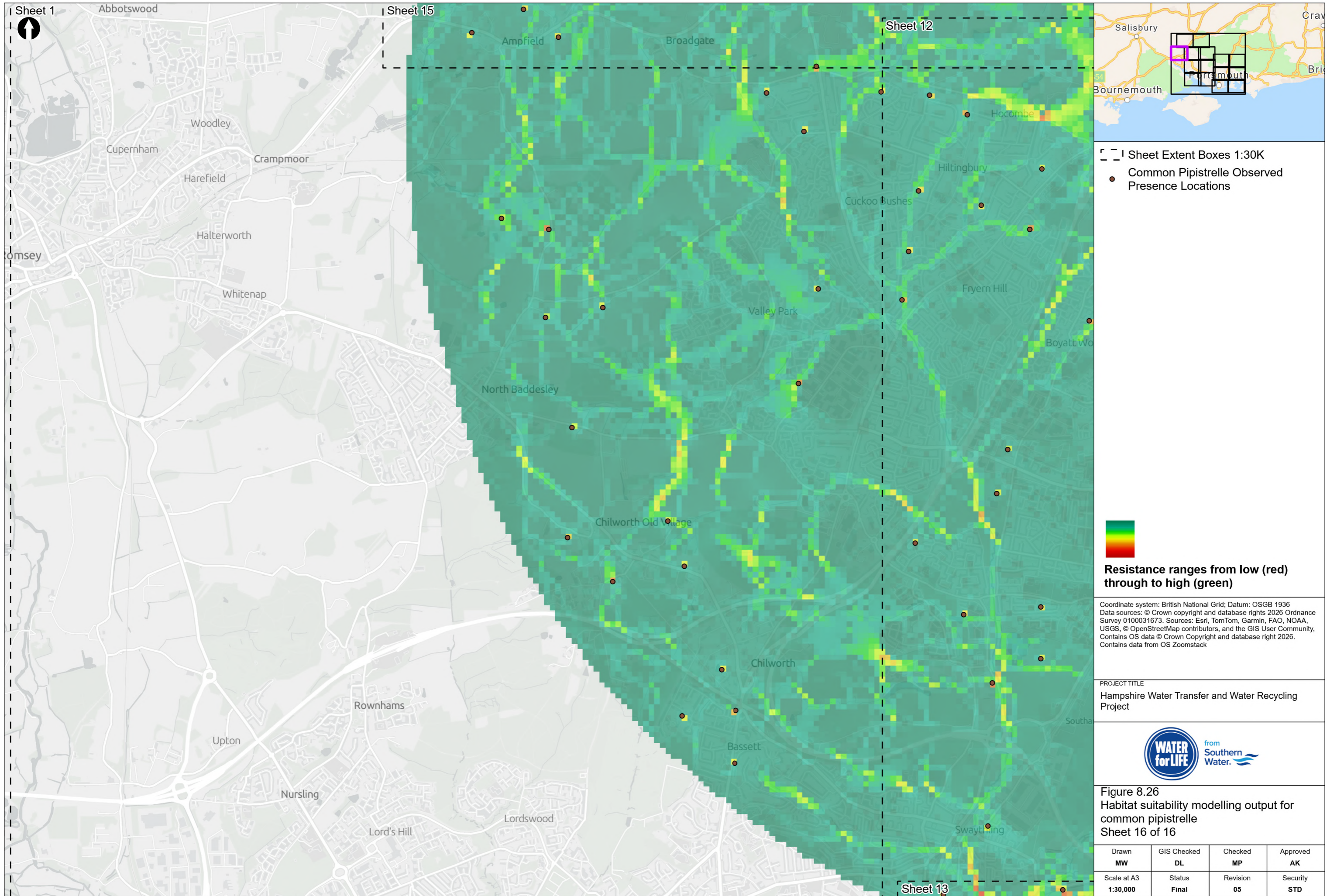
PROJECT TITLE
 Hampshire Water Transfer and Water Recycling Project



Figure 8.26
 Habitat suitability modelling output for common pipistrelle
 Sheet 15 of 16

Drawn MW	GIS Checked DL	Checked MP	Approved AK
Scale at A3 1:30,000	Status Final	Revision 05	Security STD





Sheet Extent Boxes 1:30K
 ● Common Pipistrelle Observed Presence Locations

Resistance ranges from low (red) through to high (green)

Coordinate system: British National Grid; Datum: OSGB 1936
 Data sources: © Crown copyright and database rights 2026 Ordnance Survey 0100031673. Sources: Esri, TomTom, Garmin, FAO, NOAA, USGS, © OpenStreetMap contributors, and the GIS User Community, Contains OS data © Crown Copyright and database right 2026. Contains data from OS Zoomstack

PROJECT TITLE
 Hampshire Water Transfer and Water Recycling Project



Figure 8.26
 Habitat suitability modelling output for common pipistrelle
 Sheet 16 of 16

Drawn MW	GIS Checked DL	Checked MP	Approved AK
Scale at A3 1:30,000	Status Final	Revision 05	Security STD

Drawing Number
 PC5223-RHD-ES-ZZ-D-Z-0051

© Southern Water 2026
 This document is issued for the party which commissioned it and for specific purposes connected with the captioned project only. It should not be relied upon by any other party or used for any other purpose. We accept no responsibility for the consequences of this document being relied upon by any other party, or being used for any other purpose, or containing any error or omission which is due to an error or omission in data supplied to us by other parties.

